

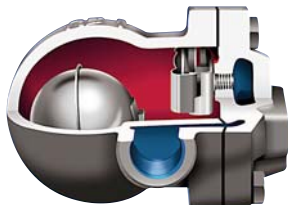
Steam equipment

Steam traps



SK 51 - Cast iron float steam trap - PN 16

Cast iron body (GGG 40.3) - Stainless steel mechanism -
Max. temperature: 250°C - Max. pressure: 16 bar - Built-in thermostatic
air eliminator - Horizontal mounting on stock - Vertical mounting on request.



BSP threaded

DN	Face to face (mm)	code Δp 4,5	code Δp 10	code Δp 14
1/2"	122	151040	151041	151042
3/4"	122	151050	151051	151052
1"	145	151060	151061	151062



Flanged PN 16

DN	Face to face (mm)	code Δp 4,5	code Δp 10	code Δp 14
15	150	150915	150916	150917
20	150	150920	150921	150922
25	160	150925	150926	150927



SK 55 - Cast iron float steam trap - Flanged PN 16 with tempered sight glass

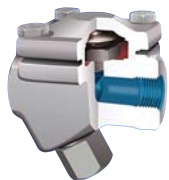
Cast iron body (GGG 40.3) - Stainless steel mechanism -
Max. temperature: 250°C - Max. pressure: 16 bar - Built-in thermostatic air eliminator -
Horizontal mounting on stock - Vertical mounting on request.



DN	Face to face (mm)	code Δp 4,5	code Δp 10
40	230	151850	151851
50	230	151860	151861

TKK 2Y - Carbon steel thermostatic steam trap - PN 40

Carbon steel body - Stainless steel mechanism - Built-in y-strainer - Thermostatic capsule in Hastelloy
and stainless steel - Max. temperature: 250°C - Max. pressure: 33 bar - Mounting: all positions.



BSP threaded

DN	Face to face (mm)	code
1/2"	95	151504
3/4"	95	151505
1"	95	151506

Flanged PN 40

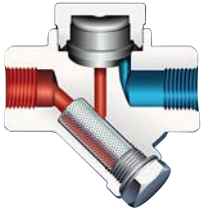
DN	Face to face (mm)	code
15	150	151615
20	150	151620
25	160	151625



TDK 45 - Carbon steel thermodynamic steam trap - PN 40

Carbon steel body - Stainless steel mechanism - Built-in y-strainer -

Max. temperature: 400°C - Max. pressure: 32 bar - Downstream max. back pressure: 80% of the upstream pressure - Horizontal mounting.



BSP threaded

DN	Face to face (mm)	code
1/2"	95	153004
3/4"	95	153005
1"	95	153006



Flanged PN 40

DN	Face to face (mm)	code
15	150	153115
20	150	153120
25	160	153125

VK - Vacuum breaker

Brass PN 16 - Max. temperature: 260°C.



DN	code
1/2"	981405

VK - Vacuum breaker

Stainless steel PN 40 - Max. temperature: 300°C.



DN	code
1/2"	981400

TK 1 - Carbon steel bi-metallic steam trap - PN 40

Carbon steel body - Stainless steel mechanism -

Use: differential pressure max. 22 bar - Built-in strainer and check valve -

Max. temperature: 250°C - Max. pressure: 32 bar - Possible adjustment of discharge capacity and condensate temperature - Installation: all positions.



BSP threaded

DN	Face to face (mm)	code
1/2"	95	153604
3/4"	95	153605
1"	95	153606



Flanged PN 40

DN	Face to face (mm)	code
15	150	154015
20	150	154020
25	160	154025

SPR 40 - Separator - Carbon steel - PN 40

Carbon steel body (AD Merkblatt 2000) - Flanged PN 40 -

Suitable for steam and compressed air -

Max. pressure: 32 bar / 250°C for steam; 40 bar / 20°C for compressed air.



DN	Face to face (mm)	CE category	Volume (l)	Ø event	Ø drainer	code
15	180	A3 § 3	1,5	1/2"	1/2"	1560A015
20	230	I	3	1"	1/2"	1560A020
25	230	I	3,4	1"	1/2"	1560A025
32	250	II	5,2	1"	1/2"	1560A032
40	300	II	5,7	1"	1/2"	1560A040
50	310	II	8,9	1"	1/2"	1560A050
65	400	II	19,4	1"1/2"	3/4"	1560A065
80	450	III	34,3	1"1/2"	3/4"	1560A080
100	500	III	57,8	1"	1"	1560A100

Pressure reducing valves



BDV 25 - Pressure reducing valve

For compressible fluids: air, gas, steam - Cast iron body GS GGG 40.3 PN 25 - Stainless steel mechanism - Built-in strainer - Max. upstream pressure: 19 bar - Max. temperature: 210°C - Locking device.

BSP threaded

DN	Face to face (mm)	Downstream pressure range		
		0,14 - 1,7 bar	1,4 - 4 bar	3,5 - 8,6 bar
1/2"	85	158041A	158042A	158043A
3/4"	98	158051A	158052A	158053A
1"	110	158061A	158062A	158063A



DRP 16 - Cast iron flanged pressure reducing valves

Cast iron body GS - Use: steam - Max. temperature: 200°C - Max. pressure: 13 bar - Δp max.: 10 bar - Inner mechanism: stainless steel.

Flanged PN 16

Upstream y-strainer to be added



DN	Face to face (mm)	Kv	Downstream pressure range				
			0,2 - 1,5 bar	1 - 4 bar	1,2 - 6 bar	1 - 10 bar	8 - 20 bar
			Actuator				
			D1	D4	D8	D10	D20
			code	code	code	code	code
15	150	3	308615015	308615040	308615060	308615100	308615200
20	150	5,5	308620015	308620040	308620060	308620100	308620200
25	160	10	308625015	308625040	308625060	308625100	308625200
32	180	14	308632015	308632040	308632060	308632100	308632200
40	200	17,5	308640015	308640040	308640060	308640100	308640200
50	230	29	308650015	308650040	308650060	308650100	308650200
65	290	48	308665015	308665040	308665060	308665100	308665200
80	310	72	308680015	-	-	308680100	308680200
100	350	107	308691015	-	-	308691100	308691200

DRP 40 - Carbon steel flanged pressure reducing valve

Carbon steel body - Use: steam - Max. temperature: 215°C - Max. pressure: 20 bar - Δp max.: 10 bar - Inner mechanism: stainless steel.

Flanged PN 40

Upstream y-strainer to be added

DN	Face to face (mm)	Kv	Downstream pressure range				
			0,2 - 1,5 bar	1 - 4 bar	1,2 - 6 bar	1 - 10 bar	8 - 20 bar
			Actuator				
			D1	D4	D8	D10	D20
			code	code	code	code	code
15	150	3	308715015	308715040	308715060	308715100	308715200
20	150	5,5	308720015	308720040	308720060	308720100	308720200
25	160	10	308725015	308725040	308725060	308725100	308725200
32	180	14	308732015	308732040	308732060	308732100	308732200
40	200	17,5	308740015	308740040	308740060	308740100	308740200
50	230	29	308750015	308750040	308750060	308750100	308750200
65	290	48	308765015	308765040	308765060	308765100	308765200
80	310	72	308780015	-	-	308780100	308780200
100	350	107	308791015	-	-	308791100	308791200